

ESA MEMBERSHIP STRUCTURE



COMPETITOR
PARTICIPANT
SUPPORTER
RECREATIONAL
CLUB
AFFILIATE



EQUESTRIAN
SOUTH AUSTRALIA

Update July 2023



Competitor Membership

Competitors can compete in the following:

Dressage: (Dressage Competition Licence required)

Grand Prix, Intermediate I & II, Intermediate A & B, Prix St George, Advanced, Medium, Elementary, Novice, Preliminary, FEI Para-Equestrian.

Prep, National Para Dressage tests of all grades.
(Competition licence not required)

Jumping:

1.05m and above (Jumping Competition licence required)

1.04 and below (Base Registration required, Competition licence not required)

Eventing:

5Star, 4Star, 3Star, 2Star, 1Star, EvA95 (Eventing Competition licence required)

EvA80 and below (Competition licence not required)

Show Horse:

National, State Championships/ HOTY Championship

*Affiliated events (Competition licence not required)

Vaulting:

Open, Advanced, Intermediate, Novice

Pre-Novice, Preliminary, Barrel

Driving:

FEI Level competition

Non FEI level & training events

Interschool:

National Championships, State Championships (Competition licence required)

Regional Events (Competition licence not required)

Conditions: Horse must hold EA Full Horse Registration & must meet State Competition Licence Requirements.

* Show Horse EA affiliated Ag Shows are exempt from SH entrants requiring EA Membership. Other Official Club or affiliated event require Participant membership at a minimum.

What is a Competitor Membership?

Competitor membership is tailored more for the advanced rider, but also allows the holder to compete at any level of equestrian sport.

Competitor Senior or Junior membership is available.

Competitor Members benefits:

- Participate in all levels of competition in the sport
- Register horses, Full & Base
- Purchase competition licences
- Covered by 24/7 Personal Accident and Public Liability Insurance
- Vote at ESA board elections and AGM's (18+ only)
- Access EA & State Communications
- Access member loyalty offers
- Access accredited education programmes
- Attend the ESA Annual Awards Night



What is a Competitor 55 & over Member?

Competitor 55 & over membership is a discounted competitor membership for riders aged 55 and over, from the start of the financial year in which the membership is being purchased.

This is open to all new members and existing members, to take advantage of the reduced competitor rate. We hope this initiative will also provide value to riders who are aged over 55 and have wanted to compete above the Participant level.

Competitor Members benefits:

- Participate in all levels of competition in the sport
- Register horses, full & base
- Purchase competition licences
- Covered by 24/7 Personal Accident and Public Liability Insurance
- Vote at ESA board elections and AGM's
- Access EA & State Communications
- Access member loyalty offers
- Access accredited education programmes
- Attend the ESA Annual Awards Night

Competitor 55 & over Membership

Competitor 55 & over can compete in the following:

Dressage:

Grand Prix, Intermediate I & II, Intermediate A & B, Prix St George, Advanced, Medium, Elementary, Novice, Preliminary, FEI Para-Equestrian.

Prep, National Para Dressage tests of all grades.

(Competition licence not required)

Jumping:

1.05m and above (Jumping Competition licence required)

1.04 and below (Base Registration required, Competition licence not required)

Eventing:

5Star, 4Star, 3Star, 2Star, 1Star, EvA95 (Eventing Competition licence required)

EvA80 and below (Competition licence not required)

Show Horse:

National, Championship State/ HOTY Championship

*Affiliated events (Competition licence not required)

Vaulting:

Open, Advanced, Intermediate, Novice

Pre-Novice, Preliminary, Barrel

Driving:

FEI Level competition

Non FEI level & training events

Conditions: Horse must hold EA Full Horse Registration & must meet State Competition Licence Requirements.

* Show Horse EA affiliated Ag Shows are exempt from SH entrants requiring EA Membership. Other Official Club or affiliated event require Participant membership at a minimum.



What is a Competitor Limited Member?

Competitor limited membership is aimed at riders who may only want to ride at a couple of events a year but at a level above that allowed on a Participant membership.

The limited membership will allow riders to enter up to four events at any level (including championships/ HOTY) in the financial year. We hope that this initiative will provide value to riders who only want to go out three or four times a year and compete above the participant level but have found the full Competitor membership cost not justifiable.

Competitor Members benefits:

- Participate in all levels of competition in the sport
- Register horses , full & base
- Purchase competition licences
- Covered by 24/7 Personal Accident and Public Liability Insurance
- Vote at ESA board elections and AGM's
- Access EA & State Communications
- Access member loyalty offers
- Access accredited education programmes
- Attend the ESA Annual Awards Night

Competitor Limited Membership

Competitor Limited can compete in the following:

Dressage:

Grand Prix, Intermediate I & II, Intermediate A & B, Prix St George, Advanced, Medium, Elementary, Novice, Preliminary, FEI Para-Equestrian.

Prep, National Para Dressage tests of all grades.

(Competition licence not required)

Jumping:

1.05m and above (Jumping Competition licence required)

1.04 and below (Base Registration required, Competition licence not required)

Eventing:

5Star, 4Star, 3Star, 2Star, 1Star, EvA95 (Eventing Competition licence required)

EvA80 and below (Competition licence not required)

Show Horse:

National, Championship State/ HOTY Championship

*Affiliated events (Competition licence not required)

Vaulting:

Open, Advanced, Intermediate, Novice

Pre-Novice, Preliminary, Barrel

Driving:

FEI Level competition

Non FEI level & training events

Conditions: Horse must hold EA Full Horse Registration & must meet State Competition Licence Requirements.

* Show Horse EA affiliated Ag Shows are exempt from SH entrants requiring EA Membership. Other Official Club or affiliated event require Participant membership at a minimum.



Participant Membership

Participants can compete in the following:

Dressage:

Novice, Preliminary, Prep (Competition licence not required)
EA National Para (Competition licence not required)

Jumping:

1.04m and below (Base Registration required, Competition licence not required)

Eventing:

EvA80 and below (Competition licence not required)

Show Horse:

*Affiliated events (Competition licence not required)

Vaulting:

Pre-Novice, Preliminary, Barrel

Driving:

Non FEI level & training events

Interschool:

Regional Events Only (Competition licence not required)

Conditions: Rider must have a minimum EA Participant membership to compete at this level & horses do not need to be registered.

An EA Participant member may only compete/participate at levels of each discipline classified as participation activities. For specific requirements for the allocation of grading points refer to the respective discipline rules— where a Competition Licence is required, the member ***must be an EA Competitor Member***.

* In the discipline of Show Horse only, EA affiliated Ag Shows are exempt from SH entrants requiring EA Membership. Entrants into all other Club or affiliated event require EA Participant membership at a minimum.

What is a Participant Membership?

Participant membership allows the holder to actively participate and contribute to lower level competition & training opportunities in equestrian sport.

Participant Senior or Junior membership is available.

Participant Members benefits:

- Participate in the introductory levels of competition
- Register horses, full & base
- Covered by 24/7 Personal Accident and Public Liability Insurance
- Vote at ESA board elections and AGM's (18+ only)
- Access to EA & State Communications
- Access member loyalty offers
- Access accredited education programmes
- Attend the ESA Annual Awards Night



Recreational Membership

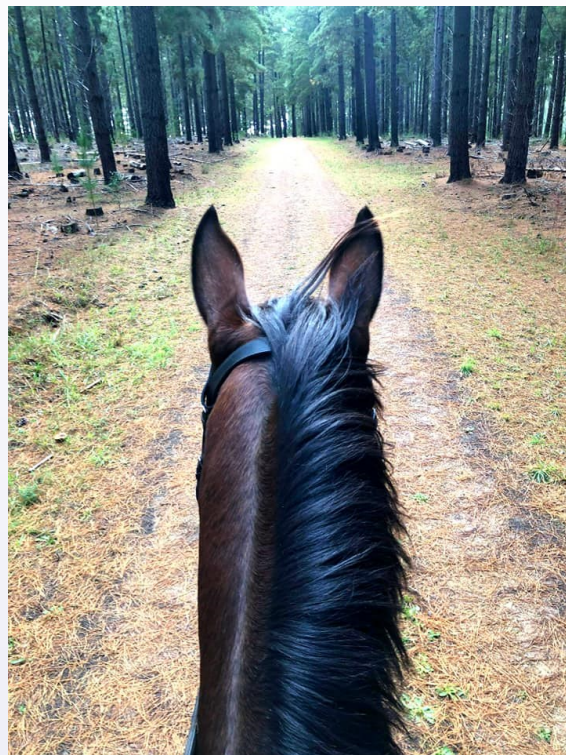
What is a Recreational Membership?

Recreational membership is for members who enjoy horse riding and doing equestrian activities for pleasure. Recreational members will be able to ride and own a horse knowing they are covered with 24/7 insurance while exercising, having lessons, going on a trail ride and so much more.

Recreational Senior or Junior Membership is available.

NON Competitive.

If you would like to compete low level, you will need to view the Participant Membership option.



Recreational Members benefits:

- Covered by 24/7 Personal Accident
- Covered by 24/7 Public Liability Insurance
- Base horse registration (*not full*)
- Access to EA & State Communications
- Access member loyalty offers
- Attend the ESA Annual Awards Night





Supporter Membership

Support Membership offer the following :

- Supporter Official
- Supporter Coach
- Supporter Owner
- Supporter Other

Supporter Official, Coach, Owner or Other Member benefits:

- Register horses, full & base
- Purchase competition licenses
- Covered by 24/7 Personal Accident and Public Liability Insurance
- Vote at ESA board elections and AGM's (18+ only)
- Access EA & State Communication
- Access member loyalty offers
- Access accredited education programmes
- Attend the ESA Annual Awards Night



What is a Supporter Member?

Supporter membership is available to those that contribute to the competitive environment of equestrian sport but do not participate in competitions, such as owners, family members (parents) or non-competing coaches.

They are recognised as having a significant contribution to the sport and give back through their various avenues. It also applies to EA accredited officials (your name must appear on an officials list with one of the EA disciplines) who do not compete or own horses.



Supporter Volunteer Membership

What is Supporter Volunteer Membership?

Supporter volunteer membership is available to those that contribute to the competitive environment of equestrian sport but do not participate in competitions, or are members on the ESA Board or a member of an ESA Discipline Committee.

They are recognised as having a significant contribution to the sport and give back through their various expertise.

Supporter Volunteer Member benefits:

- Covered by 24/7 Personal Accident and Public Liability Insurance
- Base horse registration
- Vote at ESA board elections and AGM's (18+ only)
- Access EA & State Communication
- Access member loyalty offers
- Access accredited education programmes
- Attend the ESA Annual Awards Night



Supporter Volunteers *are permitted* to base register a horse but *not permitted* to purchase a competition licence.



Who can access which horse registration?

	Full	Base
Competitor	★	★
Participant	★	★
Supporter	★	★
Recreational		★
Volunteer (Supporter)		★
Club		
Sport Affiliate		



Horse Registration

Full Registration

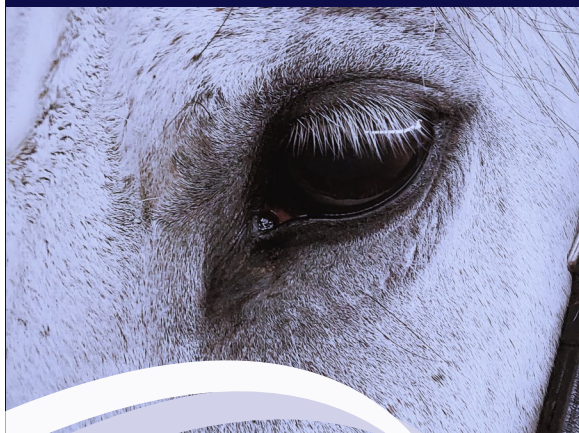
Lifetime registration of competitive horses permitting participation in equestrian competitive activities across all disciplines.

Base Registration

This lifetime registration is perfect for owners who would like horse registrations for the purpose of bio security or securing a name. Having your horse registered on the database will ensure that should disease breakout, your horse will be registered to relevant Govt agency database (such as Dept of Agriculture, Fisheries and Forestry (DAFF) and other industry databases such as Animal Health Australia. You can upgrade to Full Registration at any time. Base registration is now mandatory for horses jumping 1.04cm and below at Official EA competitions.

Benefits of a HORSE REGISTRATION

	Full	Base
Life Registration	★	★
Bio-security/Microchip database records	★	★
Participate/competition results recorded	★	
Participate in open Participation activity	★	★
Registered by any EA member	★	★





Group Affiliations — CLUBS

Clubs

What is a CLUB AFFILIATION?

For Equestrian Clubs that support the membership and contribute to sport development of equestrian across the country. A CLUB affiliation allows clubs to run competitions affiliated with Equestrian SA. (competitive & participant levels)

Benefits of a CLUB membership:

- Access to club insurance packages
- Use of EA sports rules & intellectual property
- Ability to deliver EA accredited programmes (such as Horse Management and Riding)
- Access to EA & State Communications
- Ability to conduct closed activities/events





Group Affiliations — SPORTS

Sports Affiliates

What is a SPORT AFFILIATE?

Equestrian groups which affiliate for the purpose of equestrian sport delivery.

Membership Categories:

- National & State Associations (eg State Pony Club Associations, State Riding for the Disabled Associations)
- Breed Societies (Aust Warmblood Horse Association and Show Societies)
- Schools
- Event Organisers

Benefits of a SPORT AFFILIATE membership:

- EA Insurance discounted packages
- Use of EA sports rules & intellectual property
- Ability to deliver EA accredited programs (such as Horse Management and Riding)
- Access to EA & State Communications



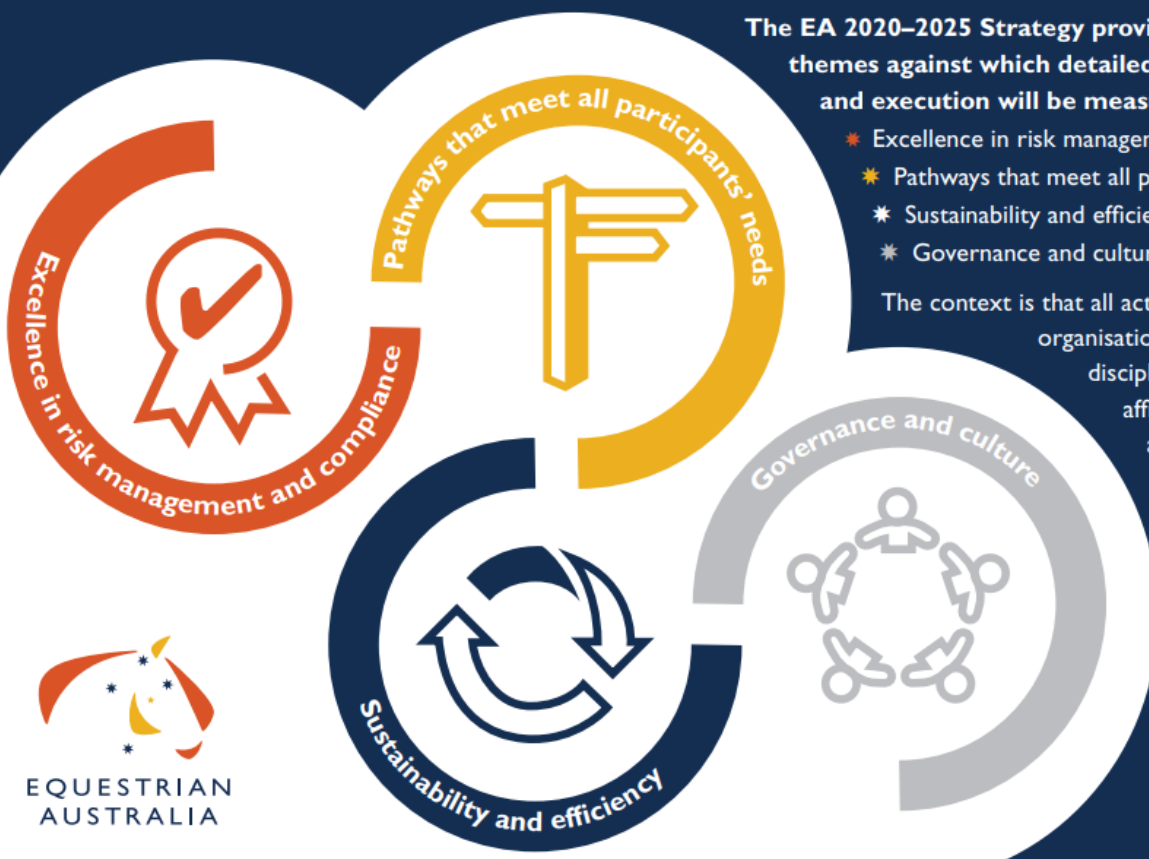
EQUESTRIAN AUSTRALIA 2020–2025 STRATEGY

The EA 2020–2025 Strategy provides four strategic themes against which detailed implementation plans and execution will be measured:

- ★ Excellence in risk management and compliance
- ★ Pathways that meet all participants' needs
- ★ Sustainability and efficiency
- ★ Governance and culture

The context is that all activity of national organisations, the state bodies, discipline committees, clubs and affiliates should be measured against benefit that accrues to participating members.

Detailed strategy implementation plans will be developed for each of the strategic themes. In the meantime, the strategic themes are used to guide our development and efforts.



EQUESTRIAN SOUTH AUSTRALIA

Unit 10, 2 Cameron Road
MOUNT BARKER SA 5251

PH: 08 8391 0488

EMAIL: reception@equestriansa.com.au

WEBSITE: www.sa.equestrian.org.au



EQUESTRIAN
SOUTH AUSTRALIA