

EQUISSAGE THERAPY WAIKERIE EASTER SHOW



THREE DAY SHOW APRIL 2nd, 3RD & 4th 2021

- SHOWJUMPING – ENCOURAGE, AFFILIATED & INTERSCHOOL
- OTT TB CLASSES
- OPEN HACK & HUNTER CLASSES
- SECOND CHANCE SHOW HORSE CLASSES
- SUPREME RIDDEN SHOW HORSE
- FASHIONS ON THE FIELD
- ENCOURAGE RING
- PONY CLUB EVENTS
- TOPSY RING
- NOVELTIES
- 4 BAR UNDER LIGHTS
- MOUNTED GAMES

Free entry all weekend - Spectators welcome

CANTEEN AVAILABLE ALL WEEKEND

Waikerie Horse and Pony Club grounds
Curtis Road, Waikerie

ENTRIES VIA NOMINATE –

ENTRIES OPEN MARCH 12TH –

CLOSE ON MARCH 28TH

All enquiries to Emma Marks 0428811558 or

el.marks@bigpond.com



**LIVE ENTERTAINMENT
SATURDAY NIGHT WITH
PETER SANTELLA**



**FASHIONS ON THE
FIELD AUTUMN
AFFAIR**



NOTES TO COMPETITORS

Membership is compulsory for all competitors and campers of the Waikerie Easter Horse Show for 2021.

Single membership is \$20.

Family up to five people is \$30

This fee is to cover toilets showers and water.

All enquiries to Emma Marks –

el.marks@bigpond.com or 0428811558

Additional entries are to be made at the secretary's office. Late Fee of \$10 will apply

Refunds will only be given on scratching's made prior to close of entry, or with a veterinary or doctors certificate.

There is no admittance to the grounds prior to Thursday.

Yards/powerd sites will be allocated on a first in basis via Nominate.

Reserve your yard/camping via Nominate.

\$15 per yard for the week end.

\$20 per night for powered site and \$10 per night camping.

Canteen Available all weekend with

Dinner available Friday and Saturday Night 6pm – 8pm

Friday Night – Chicken or Fish with Chips and Dessert - \$15, Kids U12 \$10

Saturday Night – Buffet Style Meal and Dessert - \$15, Kids U12 \$10

No lungeing of horses at any time on the oval.

Affiliation is with EA and PCASA.

Show jumping will be run under EA national and FEI show jumping rules. EA competition license must be produced on request.

Un-affiliated hack ring is for people who do not compete on a regular basis. Therefore the rider and the mount are not eligible for the open affiliated ring.

Led riders must remain led for the whole show.

Local/ Riverland riders must be a permanent resident in the Riverland.

Junior show jumpers may compete in and Young rider or open class provided the horse has a current competition license if the starting height is 1.05m or above.

Interscholar competitors aiming to qualify for the state team must register with the ESA office.

interschool@equestriansa.com.au.

Stallions may not compete in the hack rings but are permitted in show jumping events and must be handled by adults over 18 at all times.

Ages of riders is taken on the first day of the show. Helmets must be of approved safety standard and worn at all times.

All exhibits are to be in control of a capable handler at all times. Stewards reserve the right to remove any dangerous animal.

The committee reserves the right to alter or delete any events. The determination of the committee upon any question or dispute incidental to the conduct of the show shall be final and binding.

Dogs must be on a leash at all times.

Noise curfew is midnight each night and no glass is to be taken on the oval.

Camping- please use minimum area. Horse yards are to be a maximum 4x4m and built to EA standard.

Power cords must not run across tracks or roadways.

Champion in hacking events-competitors who win champion in one ring may not compete for champion in the other.

Fodder is available from Koky's Fodder Store- Michelle- 85049060

Horses are to be a Hack or a Hunter not both.

Helmets must be worn at all times when mounted. Please be aware of the new standards.

Please observe all parking signs and instructions.

OTT Classes – TRSA has amended their criteria for their classes. They are as follows.

1. Horses that have been unraced or trialled but were purchased through a recognized auction house ie. Magic Millions, Inglis, Bloodstock Auction.
 2. Horses that have unraced or trialled but have an active stable return during their life
 3. Horses that have raced or trialled.
- This will be the criteria for the ESA/Through Care Classes

COVID-19 GUIDELINES & RESTRICTIONS

As required by the SA government a COVID-Safe Plan for Waikerie Horse & Pony Club Inc has been registered. Postponement or cancellation of event will occur should the SA Government change the guidelines for community sport in line with current COVID-19 guidelines and regulations.

MINIMISING THE SPREAD OF INFECTION

- Everyone has a role to play to help stop the spread of infection, we must not be complacent.
- Physical distancing measures of 1.5 metres between people whenever possible must be followed (unless you live in the same household).
- QR Code Contact tracing will be in place for the purpose of any positive results being returned by competitors for SA Health to trace potential contacts. The information recorded includes the date and time of the activity, the name of each person in attendance, along with their phone number and email address. It is mandatory for everyone on the grounds to scan the QR code for Waikerie Horse & Pony Club Inc. at the event.
- There will be hand sanitiser readily available for all people in attendance to use.
- There will be increased cleaning of high traffic areas – such as toilets, along with hand wash and paper towels for hand hygiene.
- As of 21st August 2020, there is a requirement for sporting clubs to have a COVID Marshal. Someone to enforce the physical distancing and COVID government rules.

PEOPLE SHOULD NOT PARTICIPATE OR ATTEND IF THEY:

- Have any cold or flu like symptoms, even if mild
- Have travelled overseas or interstate, or been in close contact with a person with COVID-19 in the last 14 days.
- You are at a greater risk of more serious illness if infected with COVID-19, if you are: * Over 70 years of age * Over 65 years with chronic medical conditions * Aboriginal or Torres Strait Islander over the age of 50 years * Have compromised immune system (i.e. cancer or chronic illness)

ONLY ESSENTIAL PEOPLE SHOULD ATTEND THIS SHOW, IN LINE WITH THE NATIONAL PRINCIPLES FOR THE RESUMPTION OF SPORT AND RECREATION, THIS INCLUDES:

- Competitors
- Strappers / support people
- Essential volunteers (i.e. Convenors, committee members, grounds volunteers, judges, stewards, etc)

PRACTICE SOCIAL DISTANCING AT COMMUNITY SPORT:

- No return of ribbons will be allowed at this event
- No exchange of cash will be allowed at this event (show entry)
- When watching sport, you will keep a distance of 1.5 metres between yourself and people who don't live in your household.

HYGEINE AND BEHAVIOUR:

The risk of transmission of COVID-19 in sporting settings can be minimised by:

- All people practicing good hand hygiene at the start and end of competition and during the activity. When possible use soap and water to wash your hands (drying with paper towel) and/or using alcohol-based hand sanitiser when this is not possible.
- All people are encouraged to practice regular hand washing/sanitising.
- Cover your mouth and nose with a tissue or your sleeve (when you cough or sneeze)
- Wash your hands after sneezing or coughing, or use hand sanitiser if this is not available.
- Try to avoid touching your eyes, nose or mouth
- Do not congregate in bathrooms or any other area, always practice the 1.5 metre distancing between you and others

GOOD FRIDAY

RING 1 - SHOWJUMPING

Course Builder: Andrew Paech

Judge: Les Limpus

Commencing 10 am.

1. Open Encourage 45cm

TED & CHERYL ANGOVE

Table A article 238.2.1

Clear Round Ribbon

Entry \$6



2. Open Encourage 60cm

HOPKINS SADDLERY

Table A article 238.2.1

1st \$30 – 2nd \$20 – 3rd \$10

Entry \$6



3. Open 80cm

WAIKERIE PHARMACY

Table A article 238.2.2

Incorporating Primary Interschool

1st \$30 – 2nd \$20 – 3rd \$10

Entry \$6



4. Open 90cm

HORSELANDS ADELAIDE

Table A article 238.2.2

Incorporating Primary & Secondary Interschool

1st \$30 – 2nd \$20 – 3rd \$10

Entry \$6



5. Open 1m

RUSTON ROSES & FUNCTION CENTRE

Table A article 238.2.2

Incorporation Secondary Interschool

1st \$30 – 2nd \$20 – 3rd \$10

Entry \$6



6. Open 1.10m

STONE PINCH QUARRIES & EARTHMOVING

Time Permitting

Table A article 238.2.2

Incorporation Secondary Interschool

1st \$30 – 2nd \$20 – 3rd \$10

Entry \$6



SATURDAY

RING 1 – SHOWJUMPING

Course Builder: Andrew Paech **Judge: Les Limpus**

Commencing 8 am – Course walk 7.30am

- Horses may compete in more than 2 classes per day.
- A junior may compete in any senior class providing they have a current competition license if the starting height is 1.05 m or over.
- Run under EA national jumping rules and horses competing 1.05m and above to be EA registered and jumping licence

7. Open 75cm

SOUTHERN SPORT HORSES

Table A article 238.2.1

1st \$50 – 2nd \$30 – 3rd \$15 – 4th \$10

Entry \$8

8. Open 90cm

SUTTON FORD

Table A article 238.2.1

1st \$50 – 2nd \$30 – 3rd \$15 – 4th \$10

Entry \$8

9. Open 1.05 m

MADEC AUSTRALIA

Article 238.2.2

1st \$90 + BAG OF FEED OR

PRODUCT/VOUCHER – 2nd \$60 – 3rd \$40 –

4th \$10

Entry \$12

10. Open 1.10m - 1.15m

ALMOST MAYBE GIFT CO.

Table A article 238.2.2

1st \$90 + BAG OF FEED OR

PRODUCT/VOUCHER – 2nd \$60 – 3rd \$40 –

4th \$10

Entry \$12

11. Open 1.20 - 1.25m

EVOLUTION ANIMAL CARE

Table A article 238.2.2

1st \$120 + BAG OF FEED OR

PRODUCT/VOUCHER – 2nd \$70 – 3rd \$40 –

4th \$20

Entry \$15

12. Open 1.10m

HULL MECHANICAL

Table C article 239 + redeemer

1st \$90 + BAG OF FEED OR

PRODUCT/VOUCHER – 2nd \$60 – 3rd \$40 –

4th \$10

Entry \$12

SATURDAY EVENING CLASS

13. Open 4 Bar

ON TOP ROOF RESTORATION

1st \$60 + BAG OF FEED OR

PRODUCT/VOUCHER – 2nd \$30 – 3rd \$20

Entry \$6



www.almostmaybegiftco.com.au



SUNDAY

RING 1 - SHOWJUMPING

Course Builder: Andrew Paech

Judge: Les Limpus

Commencing 8 am – Course walk 7.30am

14. Open 1.05m – 1.10m

IRRIGEAR WAIKERIE

Table A article 238.2.1

1st \$90 + BAG OF FEED OR

PRODUCT/VOUCHER – 2nd \$60 – 3rd \$40 –
4th \$10

Entry \$12

15. Open 1.15m – 1.20m

EQUISSAGE THERAPY

Table A article 238.2.2

1st \$90 + BAG OF FEED OR

PRODUCT/VOUCHER – 2nd \$60 – 3rd \$40 –
4th \$10

Entry \$12

16. Fosters Cup Junior Championship round

Pixieville Memorial

Incorporating Secondary Interschool

1.15m Max 1st round

Table A article 238.2.2

1st \$100 – 2nd \$70 – 3rd \$40 – 4th \$20 –
5th \$10

Entry \$12

17. Riverland Championship 1.25m

JOHNSON'S NATURAL FORMULA

Table A Article 273.3.3.1

1st \$250 + Rug – 2nd \$110 – 3rd \$80 –
4th \$40 - 5th \$20

Entry \$26

18. Open 90cm

RIVERLAND RETREAT AIR BNB

Table A article 238.2.1

1st \$50 – 2nd \$30 – 3rd \$15 – 4th \$10

Entry \$8

19. Open 1m

WAIKERIE COACHES

Table A article 238.2.2

1st \$50 – 2nd \$30 – 3rd \$15 – 4th \$10

Entry \$8



FRIDAY RINGS

IMPORTANT RULES & REGULATIONS

Entering this competition constitutes acknowledgment that PCASA rules apply and your acceptance of these rules.

Neither the organising committee of any event to which these rules apply nor the Pony Club Association of South Australia Inc. accepts any liability for any accident, damage, injury to horses, owners, riders, grounds, spectators or any other persons.

PCASA approved helmets and boots must always be worn when mounted.

Plaiting and Jackets are optional in all rings; you may compete in Pony Club uniform in all rings. Competitors will not be penalised.

Age of riders will be as at 1st JANUARY 2021.

No stallions or colts permitted.

Horses must be age 3yrs and over to compete.

Convenor on the day, judges and/or Stewards have the authority to remove from the ring any horse/pony considered to be dangerous or to be interfering with other competitors or unsound. If a judge feels a combination is not eligible to does not fit that ring's specifications, the combination will be then down-graded or up-graded to another ring.

If you know that your horse or pony kicks, please place a RED RIBBON in its tail so that other riders are aware.

Classes will not be held for competitors who are in another ring.

All Pony Club Classes will be run under PCASA rules and Official Pony Club Uniform must be worn in these classes.

For classes whose winners are eligible for Champion, 2nd place getters should be on stand-by for Reserve Champion.

FRIDAY
RING 2 - " L " PLATES & TOPSY
Start time: 10.00am
Judge: Terry Hocking
\$3 Per Class

The judges decision is final.

Riders must remain on lead line by a responsible adult.

Combinations that compete in Ring 1. are not eligible to compete in Ring 2. The exception being Pony Club classes and Fancy Dress (open to all).

20. Led Pony & Handler Combination
– child 8yrs & under.

21. Led Pony/Horse & Handler
Combination – child 9yrs & under
12yrs

Judge to allow 10mins to saddle up.

22. Smartest on Parade Ridden –
Rider 8yrs & under

23. Ridden Pony or Horse – rider 8yrs
& under

24. Rider – 8yrs & under

25. Learners Versatile Handy
Pony/Horse – Rider 8yrs & under

26. Pleasure Pony/Horse – rider 8yrs
& under – snaffle bit, no whip or
spurs

***BEST EQUESTRIAN COMBINATION – 8YRS &
UNDER***

27. Smartest on Parade – Rider 9yrs
& under 12yrs

28. Ridden Pony or Horse – rider 9yrs
& under 12yrs

29. Rider – 9yrs & under 12yrs

30. Learners Versatile Handy
Pony/Horse – Rider 9yrs & under
12yrs

31. Pleasure Pony/Horse – rider 9yrs
& under – snaffle bit, no whip or
spurs

***BEST EQUESTRIAN COMBINATION – 9YRS &
UNDER 12YRS***

GAMES

32. Led Walk/Trot Race

33. Led Key Hole (timed event)

34. Spin the Bottle

FRIDAY
RING 3
ENCOURAGE
Start time: 10.00am
Judge: Miss Te-elle Hofmann
\$3 Per Class

The judges decision is final.

Combinations that compete in the Encourage Classes may not compete in the Open ESA rings (Saturday).

- 35. Led Pony ne 12hh
- 36. Led Pony 12hh ne 14hh
- 37. Led Galloway over 14hh ne 15hh
- 38. Led Hack over 15hh

CHAMPION & RESERVE CHAMPION LED HORSE/PONY

Judge to allow 10mins to saddle up.

- 39. Smartest on Parade – Rider under 12yrs
- 40. Smartest on Parade – Rider 12yrs and under 18yrs
- 41. Smartest on Parade – Rider 18yrs and Over

CHAMPION & RESERVE SMARTEST ON PARADE

- 42. Maiden Pony ne 14hh (has not placed 1st in any ridden event previously)
- 43. Maiden Galloway over 14hh ne 15hh (has not placed 1st in any ridden event previously)
- 44. Maiden Hack over 15hh (has not placed 1st in any ridden event previously)

- 45. Open Small Pony ne 12hh
- 46. Open Large Pony 12hh ne 14hh
- 47. Open Small Galloway over 14hh ne 14.2hh
- 48. Open Large Galloway over 14.2hh ne 15hh
- 49. Open Small Hack over 15hh ne 16hh
- 50. Open Large Hack over 16hh

CHAMPION & RESERVE CHAMPION HACK (42 to 50)

- 51. Rider under 12yrs (must be riding independently & unassisted)
- 52. Rider 12yrs & under 15yrs
- 53. Rider 15yrs & under 17yrs
- 54. Rider 17yrs & under 21yrs
- 55. Rider 21yrs & under 27yrs
- 56. Rider 27yrs & Over

CHAMPION & RESERVE CHAMPION RIDER (51 - 56)

NOTE: (no double bridle, whip or spurs)

- 57. Ridden Pleasure Pony ne 14hh
- 58. Ridden Pleasure Galloway 14hh ne 15hh
- 59. Ridden Pleasure Hack over 15hh

½ hour break to allow for those competing in Pony Club classes to change into uniform.

FRIDAY

RING 3

PONY CLUB

Start: To commence at the completion of the Encourage Classes

Judge: Miss Te-elle Hofmann

\$3 Per Class

The judges decision is final.

* Pony Club classes are open to current full riding financial pony club members of PCASA.

* Combinations must have an Attendance Card (must be presented to the judge if requested).

* Compete in their full formal pony club uniform.

68. Pony Club Mount & Rider 18yrs & under 26yrs

69. Pony Club Mount & Rider 26yrs & Over

CHAMPION & RESERVE CHAMPION PONY CLUB MOUNT & RIDER (from classes 60 to 69)

60. Smartest on Parade Pony Club Mount & Rider – any age - (may be led)

61. Most Versatile Pony Club Mount ne 14hh

62. Most Versatile Pony Club Mount over 14hh ne 15hh

63. Most Versatile Pony Club Mount over 15hh

64. Led Pony Club Mount & Rider under 10yrs

64b Pony Club Mount & Rider under 10yrs

65. Pony Club Mount & Rider 10yrs & under 12yrs

66. Pony Club Mount & Rider 12yrs & under 15yrs

67. Pony Club Mount & Rider 15yrs & under 18yrs

NOTE: ½ hour break to allow for those to change into Fancy Dress costumes

70. FANCY DRESS

NOVELTIES & GAMES – RING 3

Start: To commence at the completion of the Pony Club events in Ring 3.

OPEN TO ALL competitors over the weekend.

71. Bending Race

72. Can Race

73. Sack Race

74. Texas Barrel (timed)



Australian Mounted Games Association

Easter Comp 2nd & 3rd April

Led/Assisted/Novice – Fri 10:30 Start – Novice horses and led riders (led riders must demonstrate some control, small controlled canters permitted).

- This will be held over 2 sessions (5 races each). The first at 10:30 and the second after the first Pairs heat. All riders will receive a ribbon.*

Pairs – Fri 11:00 start – U12, U15, U18, Open & Over 25's. Age groups may be combined depending on numbers. If you don't have a pair one will be allocated on the day.

- This will be run over 2 heats (7 races each) and a final (10 races). Ribbons to 6th place.*

Teams – Sat 3:00 start – Mixed age groups. Teams (5 riders) will be allocated on the day.

- This will be run over 2 heats (7 races each) and a final (10 races). Ribbons to 6th place.*

Strictly NO whips, spurs, bad or un-sports like behaviour. Failure to comply may result in disqualification, point deductions or a request to leave the grounds. Riders are required to help run gear between their sessions.

Entries Via Nominate:

Led/Assisted/novice - \$25

Friday only \$30

Saturday only \$30

Friday & Saturday \$40

Dress: Boots, approved helmet, fawn or black coloured

jodhpurs/riding pants and a collared shirt must be worn.

All enquiries to Kylie Borchers ph. 0400 737 551 or JRNH@yahoo.com

Happy Easter!!!



WAIVER

**Each member must sign and submit a Waiver Form to become a day member of the AMGA (South Australia)
THE FOLLOWING WILL AFFECT YOUR LEGAL RIGHTS AND LIABILITIES PLEASE READ CAREFULLY**

In consideration for being permitted to participate in any way in horse sport activities, I the undersigned, understand, acknowledge and accept that:

- Horse sports are a dangerous activity and horses can act in suddenly unpredictable ways, especially if excited, frightened or hurt.
- There is a significant risk that serious **INJURY, DISABILITY** or **DEATH** may result from horse sport activities, including but not limited to horseback riding, handling and grooming of horses and other stable/arena work.
- I understand and acknowledge the dangers associated with the consumption of alcohol or any mind-altering drugs and agree not to drink alcohol or take drugs prohibited by law before or during sporting events and or activities.
- I agree to follow the directions of any event organiser or official and that any misconduct or refusal by me to follow any direction of any organiser or official can result in the **CANCELLATION** of my participation in the activities and my immediate removal from my horse **NO MATTER** where that may occur.
- I agree to wear an approved helmet at all times whilst participating in the sport where this is required under the relevant EA and FEI rules and regulations.

I wish to participate in these activities knowing that they are dangerous. I accept and assume all risks of injury (including death) to me and/or my property (including horses). I agree to compete at my own risk and to indemnify and keep indemnified the Australian Mounted Games Association and any third parties associated with their activities. In exchange for being permitted to participate in these activities, for myself, my heirs, guardians, and legal representatives, I release and agree not to make or bring any claim of any kind against Australian Mounted Games Association, or officials, servants, employees, representatives, officers, and directors for any injury (including death), to me or any damage to my property, arising out of my participation in these dangerous riding or related activities.

I have had sufficient opportunity to read this Dangerous Activity Acknowledgement and Application Form and fully understand its terms and the information provided to me relating to the 3rd Party Insurance. I sign this Waiver freely and voluntarily.

Name: _____

Signature: _____

Date____/____/20____ Mobile:_____

Address: _____

Emergency Contact: _____ Ph: _____

For Participants of Minority Age (Under Age 18)

This is to certify that I, as a parent/guardian with legal responsibility for this participant, acknowledge, understand and accept ALL OF THE ABOVE and consent and agree to my minor child's involvement or participation in horse sport activities.

Signature (parent/guardian) _____

Print Name _____

Dated ____/____/20____

SATURDAY

RING 2

LED SHOW HORSE & SHOW HUNTER

Start Time: 9.00am

\$4 Per Class

* These events are to take place before any of the Open Ring events commence.

* If you are unsure if your horse is Show Hack or Show Hunter - Please seek clarification from the Judge at beginning of classes.

82. Led Show Hack over 15hh

83. Led Hunter Hack over 15hh

**CHAMPION & RESERVE LED HACK
OVER 15HH**

75. Led Shetland

76. Led Show Pony ne 12.2hh

77. Led Hunter Pony ne 12.2hh

78. Led Show Pony 12.2hh ne 14hh

79. Led Hunter Pony 12.2hh ne 14hh

**CHAMPION & RESERVE LED PONY NE
14HH**

80. Led Show Galloway 14hh ne 15hh

81. Led Hunter Galloway 14hh ne 15hh

**CHAMPION & RESERVE LED
GALLOWAY 14HH NE 15HH**

***Champion Led from each height class are
invited to compete for***

***** Supreme Led Exhibit of
Show *****

**Sunday morning at the completion of the
OTTSA Led Thoroughbred classes.**

SATURDAY

RING 2

SHOW HACKS

Judge: Mrs Amy Litchfield

\$4 Per Class

- 84. Show Hack 15hh ne 15.2hh
- 85. Show Hack 15.2 ne 16hh
- 86. Show Hack over 16hh
- 87. Lightweight Show Hack over 15hh
- 88. Heavyweight Show Hack over 15hh
- 89. Open Show Hack over 15hh
- 90. *Newcomer Show Hack over 15hh
- 91. **Childs Show Hack over 15hh - (rider under 17yrs)

CHAMPION & RESERVE CHAMPION SHOW HACK

- 92. Show Galloway 14 ne 14.2hh
- 93. Show Galloway 14.2 ne 15hh
- 94. Lightweight show Galloway 14 ne 15hh
- 95. Heavyweight show Galloway 14 ne 15hh
- 96. Open Show Galloway 14 ne 15hh
- 97. *Newcomer Show Galloway 14 ne 15hh
- 98. **Childs Show Galloway 14hh ne 15hh

CHAMPION & RESERVE CHAMPION SHOW GALLOWAY

- 99. Show pony 12.2 ne 13hh
- 100. Show pony 13hh ne 13.2hh
- 101. Show pony 13.2 ne 14hh
- 102. Lightweight show pony 12.2 ne 14hh
- 103. Heavyweight show pony 12.2 ne 14hh

- 104. Open show pony 12.2 ne 14hh
- 105. *Newcomer show pony 12.2 ne 14hh
- 106. **Childs Show Pony 12.2 ne 14hh

CHAMPION & RESERVE CHAMPION MEDIUM SHOW PONY 12.2 NE 14HH

- 107. Ridden Shetland Pony
- 108. Show pony ne 11.2hh
- 109. Show pony 11.2 ne 12hh
- 110. Show pony 12hh ne 12.2hh
- 111. Lightweight show pony ne 12.2hh
- 112. Heavyweight show pony ne 12.2hh
- 113. Open Show pony ne 12.2hh
- 114. *Newcomer Show Pony ne 12.2hh *
- 115. **Childs Show Pony ne 12.2hh (rider under 17yrs)
- 116. First Ridden Show Pony ne 12.2hh (rider 5yrs & under 12yrs)

CHAMPION & RESERVE CHAMPION SMALL SHOW PONY NE 12.2HH

CHAMPION & RESERVE CHAMPION NEWCOMER SHOW HACK (from winners of 90,97,105,114)

CHAMPION & RESERVE CHILDS SHOW HACK (from winners of 91,98,106,115)

SATURDAY
RING 3
SHOW HUNTERS
Judge: Mrs Sharon Cockburn
\$4 Per Class

- 117. Hunter Hack 15hh ne 15.2hh
- 118. Hunter Hack 15.2 ne 16hh
- 119. Hunter Hack over 16hh
- 120. Lightweight Hunter Hack over 15hh
- 121. Heavyweight Hunter Hack over 15hh
- 122. Open Hunter Hack over 15hh
- 123. *Newcomer Hunter Hack over 15hh
- 124. **Childs Hunter Hack over 15hh - (rider under 17yrs)

CHAMPION & RESERVE CHAMPION HUNTER HACK

- 125. Hunter Galloway 14 ne 14.2hh
- 126. Hunter Galloway 14.2 ne 15hh
- 127. Lightweight Hunter Galloway 14 ne 15hh
- 128. Heavyweight Hunter Galloway 14 ne 15hh
- 129. Open Hunter Galloway 14 ne 15hh
- 130. *Newcomer Hunter Galloway 14 ne 15hh
- 131. **Childs Hunter Galloway 14hh ne 15hh

CHAMPION & RESERVE CHAMPION HUNTER GALLOWAY

- 132. Rider 8yrs & under
- 133. Rider over 8yrs & under 12yrs
- 134. Rider 12yrs & under 15yrs
- 135. Rider 15yrs & under 17yrs
- 136. Rider 17yrs & under 21yrs
- 137. Rider 21yrs & under 30yrs
- 138. Rider 30yrs & over

CHAMPION & RESERVE CHAMPION RIDER

- 139. Medium Hunter pony 12.2 ne 13hh
- 140. Medium Hunter pony 13hh ne 13.2hh
- 141. Medium Hunter pony 13.2 ne 14hh

- 142. Lightweight Medium Hunter pony 12.2 ne 14hh
- 143. Heavyweight Medium Hunter pony 12.2 ne 14hh
- 144. Open Medium Hunter pony 12.2 ne 14hh
- 145. *Newcomer Medium Hunter pony 12.2 ne 14hh
- 146. **Childs Medium Hunter Pony 12.2 ne 14hh

CHAMPION & RESERVE CHAMPION MEDIUM HUNTER PONY 12.2 NE 14HH

- 147. Small Hunter pony ne 11.2hh
- 148. Small Hunter pony 11.2 ne 12hh
- 149. Small Hunter pony 12hh ne 12.2hh
- 150. Lightweight Small Hunter pony ne 12.2hh
- 151. Heavyweight Small Hunter pony ne 12.2hh
- 152. Open Small Hunter pony ne 12.2hh
- 153. *Newcomer Small Hunter Pony ne 12.2hh *
- 154. **Childs Small Hunter Pony ne 12.2hh (rider under 17yrs)
- 155. First Ridden Hunter Pony ne 12.2hh (rider 5yrs & under 12yrs)

CHAMPION & RESERVE CHAMPION SMALL HUNTER PONY NE 12.2HH

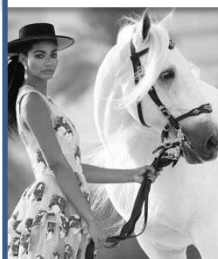
CHAMPION & RESERVE CHAMPION NEWCOMER HUNTER HORSE (from winners of 123,130,145,153)*

CHAMPION & RESERVE CHILDS HUNTER HORSE (from winners of 134,131,146,154)**

SUPREME RIDDEN SHOW HORSE

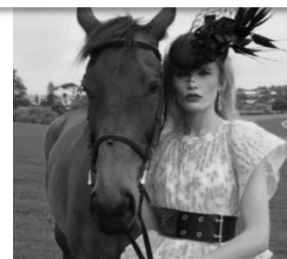
To be held at the conclusion of both rings

156. FASHIONS ON THE FIELD – AUTUMN AFFAIR – FREE ENTRY



Competitors will be given appropriate time to get themselves and their horses ready.

Judge: Clare Lindop



OFF THE TRACK

South Australia

The *Off the Track class* is exclusive to retired Thoroughbred racehorses in South Australia and has been introduced at selected South Australian Agricultural Shows, Equestrian South Australia events and Show Horse Council of South Australia Shows.

There are currently thousands of retired racehorses in South Australia succeeding in their post racing lives as show horses and many have gone on to win major shows including Grand Nationals, Royal Shows and Horse of the Years. Thoroughbreds are a highly sought after breed for equestrian disciplines because of their versatility and striking presence.

These classes are open to all thoroughbreds.

INFORMATION FOR COMPETITORS

- Off The Track Classes are open to all Thoroughbreds that have been lodged in a stable return for pre training, race preps, & have officially raced or barrier trialled, locally, nationally or internationally. All horses are required to be 3 years and over and be no less than 14.2hh.
- All horses will be registered with Racing Australia. Registrations and stable returns for those that did not make it to the races will be checked.
- Racing Name is to be used. Other than those that were unnamed due to being too slow, injuries etc, during pre-training. In this instance, please contact us before entering classes for your clearance.
- Qualifying shows must be affiliated with Agricultural Societies of SA, Equestrian SA or Show Horse Council of SA.
- The season is a calendar year.
- Random drug testing may be carried out.
- The committee reserves the right to refuse an entry without assigning any reason for doing so and to alter the program/schedule at their discretion.
- Horses will be judged as a good example of a thoroughbred, with the following taken into consideration:
 - Thoroughbred qualities
 - Conformation
 - Manners
 - Paces and performance
 - Injuries caused through racing, such as blemishes, are allowed.
- Judges decision is final in the qualifiers, and the state finals/championships.
- Horse and owner must reside in SA to compete.
- Every horse that enters the finals/championships must be ridden by the same rider that qualified the horse, unless the horse has been sold.
- NOTE: The handling and riding of horses is a dangerous activity and can result in serious injury and loss. Neither our Club, nor any member of our Club or Committee, accepts any responsibility for any loss or damage suffered by any person. All persons who handle or ride a horse, or who attend on, any premises at which our Club is conducting an event do so entirely at their own risk.

SUNDAY
RING 2
OFF THE TRACK – SOUTH AUSTRALIA
LED THOROUGHBRED CLASSES

Start Time: 9.00am

\$4 Per Class

Judge: Clare Lindop

NOTE: Once a Led event has been won, you are not eligible to compete in another led class unless for Champion/Reserve Champion Led, Grand Champion Led or Supreme Led Exhibit

- 157. Led Newcomer Mare (not shown prior to 1st January 2021)
- 158. Led Mare of Show Hack Qualities
- 159. Led Mare of Show Hunter Qualities
- 160. Led Mare of Staying Type
- 161. Led Mare of Sprinter Type

CHAMPION & RESERVE LED THOROUGHBRED

MARE - Sponsored by MacMillan Racing.

(Not eligible to compete in ESA Led Track to Hack 'Show Hack' class 167 or 168.)

- 162. Led Newcomer Gelding (not shown prior to 1st January 2021)
- 163. Led Gelding of Show Hack Qualities
- 164. Led Gelding of Show Hunter Qualities
- 165. Led Gelding of Staying Type
- 166. Led Gelding of Sprinter Type

CHAMPION & RESERVE LED THOROUGHBRED

GELDING - Sponsored by Darren Magro Racing.

(Not eligible to compete in ESA Led Track to Hack 'Show Hunter' class 167 or 168.)

167. Equestrian SA - Led Track to Hack Show Hack (ESA HOTY Qualifier)

168. Equestrian SA - Led Track to Hack Show Hunter (ESA HOTY Qualifier)

GRAND CHAMPION LED THOROUGHBRED

(from winners of CHAMPION Mare, CHAMPION Gelding & Classes 167 & 168)

SUPREME LED EXHIBIT OF SHOW

**** Champion Winners from Saturday Led Classes are invited to compete ****

Led Mare Classes, Sponsored by MacMillan Racing.



Led Gelding Classes, Sponsored by Darren Magro Racing.



OTT Classes – TRSA has amended their criteria for their classes.

They are as follows.

1. Horses that have been unraced or trialed but were purchased through a recognized auction house ie. Magic Millions, Inglis, Bloodstock Auction.
 2. Horses that have unraced or trialed but have an active stable return during their life
 3. Horses that have raced or trialed.
- This will be the criteria for the ESA/Through Care Classes



THOROUGHCARESA.COM.AU

**The horse is
at the heart of
everything we do.**

To reinforce this message, Racing SA has committed 1% of prizemoney towards equine welfare initiatives, including the ongoing support and promotion of thoroughbred horses before, during and after their racing careers.



SUNDAY
RING 2
OFF THE TRACK – SOUTH AUSTRALIA
RIDDEN THOROUGHBRED CLASSES
\$4 Per Class
Judge: Clare Lindop

NOTE: Definitions: NEWCOMER: must not have competed under saddle at any official event prior to 1st January 2021. SECOND SEASON: Horse to be competing in it's second season of showing.

- 169. Newcomer Ridden 'Show Hack' Mare
- 170. Newcomer Ridden 'Show Hunter' Mare
- 171. Newcomer Ridden 'Show Hack' Gelding
- 172. Newcomer Ridden 'Show Hunter' Gelding

- 173. *Equestrian SA Newcomer Track to Hack Show Hack* ESA HOTY Qualifier
- 174. *Equestrian SA Newcomer Track to Hack Show Hunter * ESA HOTY Qualifier

CHAMPION RIDDEN NEWCOMER THOROUGHBRED (169 - 172)

- 175. Senior Thoroughbred Aged 12yrs to 15yrs
- 176. Senior Thoroughbred Aged over 15yrs
- 177. Thoroughbred ne 15.2hh
- 178. Thoroughbred 15.2hh ne 16hh
- 179. Thoroughbred 16hh ne 16.2hh
- 180. Thoroughbred over 16.2hh
- 181. Open Ridden Thoroughbred of Show Hack Qualities
- 182. Open Ridden Thoroughbred of Show Hunter Qualities

CHAMPION RIDDEN THOROUGHBRED (from 175 - 182)

- 183. Childs Thoroughbred - rider under 17yrs
- 184. Ladies Thoroughbred - rider over 17yrs
- 185. Gentleman's Thoroughbred - rider over 17yrs
- 186. All-rounder Thoroughbred - required to do a small varied workout, jump & carry an object.

CHAMPION VERSATILE RIDDEN THOROUGHBRED (CLASSES 183 - 186)

- 187. *Equestrian SA Second Season Track to Hack Show Hack
- 188. *Equestrian SA Track to Hack Show Hack ne 16h
- 189. *Equestrian SA Track to Hack Show Hack over 16h

ESA CHAMPION/RESERVE TRACK TO HACK SHOW HACK

- 190. *Equestrian SA Second Season Track to Hack Show Hunter
- 191. *Equestrian SA Track to Hack Show Hunter ne 16h
- 192. *Equestrian SA Track to Hack Show Hunter over 16h

ESA CHAMPION/RESERVE TRACK TO HACK SHOW HUNTER

OTTSA Members Only Classes (must be a financial member of OTTSA)

- 193. Girl Rider 12yrs & under 15yrs
- 194. Girl Rider 15yrs & under 17yrs
- 195. Lady Rider 17yrs & Over
- 196. Boy Rider 12yrs & under 15yrs
- 197. Boy Rider 15yrs & under 17yrs
- 198. Gentleman Rider 17yrs & Over

CHAMPION & RESERVE CHAMPION THOROUGHBRED RIDER

SUPREME RIDDEN 'OFF THE TRACK SA' THOROUGHBRED

***** Qualifying events for ESA HOTY *****

All 1st place winners qualify for finals to be held in conjunction with the 2021 Equestrian SA Horse of The Year.



Horse Race Name:	
Life Number:	
Brand Near Side Shouder:	
Brand Off Side Shouder:	
White Markings:	
Sire:	
Dam:	

Racing Career if known:

Exhibitor Details:

Name of Exhibitor:	
Address:	
Contact ph number:	
Email:	
PIC Number:	

SUNDAY
RING 3
SECOND CHANCE SHOW HORSE CLASSES

Judge: Miss Te-elle Hofmann

Start Time: 9.00am

\$4 Per Class

- 199. Ridden Shetland Pony
- 200. Show pony ne 12.2hh
- 201. Show pony 12.2 ne 14hh
- 202. Lightweight show pony ne 14hh
- 203. Heavyweight show pony ne 14hh
- 204. Open show pony ne 14hh
- 205. Newcomer show pony ne 14hh
- 206. Childs Show Pony ne 14hh
- 207. First Ridden Show Pony ne 12.2hh (rider
5yrs & under 12yrs)

**CHAMPION & RESERVE CHAMPION
SHOW PONY NE 14HH
Sponsored by Starkey Farms**

- 208. Small Show Galloway 14 ne 14.2hh
- 209. Large Show Galloway 14.2 ne 15hh
- 210. Lightweight show Galloway 14 ne 15hh
- 211. Heavyweight show Galloway 14 ne 15hh
- 212. Open Show Galloway 14 ne 15hh
- 213. Newcomer Show Galloway 14 ne 15hh
- 214. Childs Show Galloway 14hh ne 15hh

**CHAMPION & RESERVE CHAMPION
SHOW GALLOWAY
Sponsored by Cot's Car Detailing**

- 215. Show Hack 15hh ne 15.2hh
- 216. Show Hack 15.2 ne 16hh
- 217. Show Hack over 16hh
- 218. Lightweight Show Hack over 15hh
- 219. Heavyweight Show Hack over 15hh
- 220. Open Show Hack over 15hh
- 221. Newcomer Show Hack over 15hh
- 222. Childs Show Hack over 15hh - (rider
under 17yrs)

**CHAMPION & RESERVE CHAMPION
SHOW HACK
Sponsored by Cot's Car Detailing**

- 223. Small Hunter pony ne 12.2hh
- 224. Medium Hunter pony 12.2 ne 14hh
- 225. Lightweight Hunter pony ne 14hh
- 226. Heavyweight Hunter pony ne 14hh
- 227. Open Show Hunter pony ne 14hh
- 228. Newcomer Hunter pony ne 14hh
- 229. Childs Hunter Pony ne 14hh
- 230. First Ridden Hunter Pony ne 12.2hh (rider
5yrs & under 12yrs)

**CHAMPION & RESERVE HUNTER PONY
12.2 NE 14HH
Sponsored by Starkey Farms**

- 231. Small Hunter Galloway 14 ne 14.2hh
- 232. Large Hunter Galloway 14.2 ne 15hh
- 233. Lightweight Hunter Galloway 14 ne 15hh
- 234. Heavyweight Hunter Galloway 14 ne 15hh
- 235. Open Hunter Galloway 14 ne 15hh
- 236. Newcomer Hunter Galloway 14 ne 15hh
- 237. Childs Hunter Galloway 14hh ne 15hh

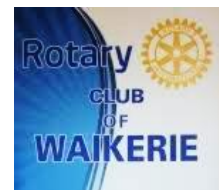
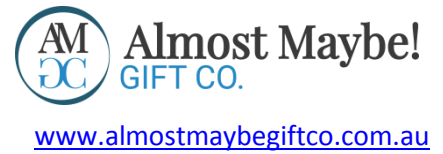
**CHAMPION & RESERVE CHAMPION
HUNTER GALLOWAY
Sponsored by Cot's Car Detailing**

- 238. Hunter Hack 15hh ne 15.2hh
- 239. Hunter Hack 15.2 ne 16hh
- 240. Hunter Hack over 16hh
- 241. Lightweight Hunter Hack over 15hh
- 242. Heavyweight Hunter Hack over 15hh
- 243. Open Hunter Hack over 15hh
- 244. Newcomer Hunter Hack over 15hh
- 245. Childs Hunter Hack over 15hh - (rider
under 17yrs)

**CHAMPION & RESERVE CHAMPION
HUNTER HACK
Sponsored by Cot's Car Detailing**



WITH THANKS TO OUR VALUED SPONSORS OF THE 2021 EQUISSAGE THERAPY WAIKERIE EASTER SHOW & WH&PC



WITH THANKS TO OUR VALUED SPONSORS OF THE 2021 EQUISSAGE THERAPY WAIKERIE EASTER SHOW & WH&PC

**Waikerie
Coaches**



**HULL
MECHANICAL**

Dave & Rose Neideck

Morgan Roadhouse

**Ted & Cheryl
Angove**



**MERRETT
FAMILY**



**GIA
INSURANCE BROKERS**

**RIVERLAND
RETREAT AIR BNB**



THOROUGHCARESA.COM.AU

The horse is
at the heart of
everything we do.

To reinforce this message, Racing SA has committed 1% of prizemoney towards equine welfare initiatives, including the ongoing support and promotion of thoroughbred horses before, during and after their racing careers.

